



Designed to Simplify and Standardize Gas Analysis

GAS XLNC™ Software



PAC

www.paclp.com

GAS

XLNC™

Gas Analysis Software Excellence



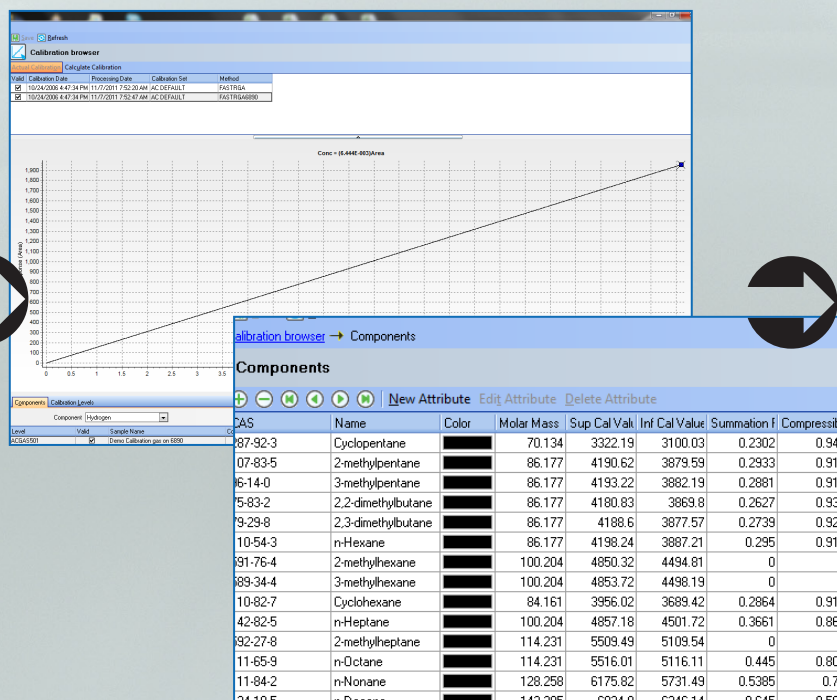
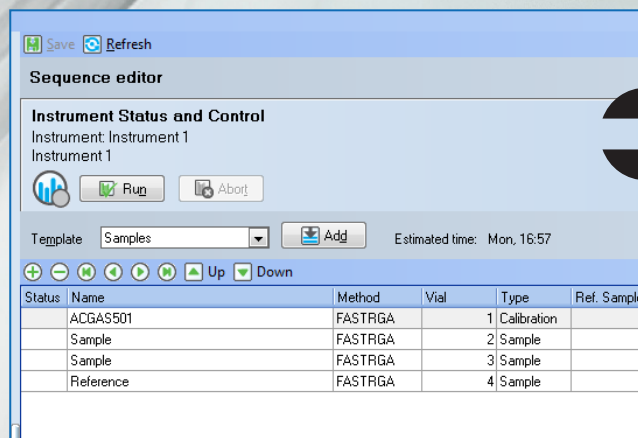
ac®
ANALYTICAL CONTROLS
by **PAC**

Easy to Use Software Designed to Simplify and Standardize Gas Analysis

- Includes Extensive Range of Report Options and Calculations
- Users can add and customize Calculations to their Specific Needs
- High Level of Automation contributes to Optimized Analysis Accuracy and Precision
- In Compliance with Various Refinery and Natural Gas Standard Test Methods



GASXLNC™ WORKFLOW



INSTRUMENT STATUS AND CONTROL

- Instrument status, creates sequences, and calculates end time for sequence
- Templates for samples/calibrations, LIMS ID

CALIBRATION

- Setup multiple calibration sets
- Add sample uncertainties, track expiration dates

COMPONENTS FLEXIBILITY

- Add or edit physical properties for each component needed

ADVANCED OPTIONS

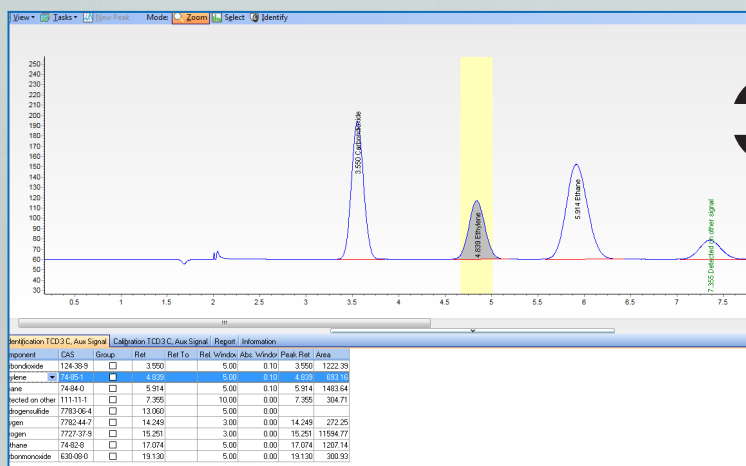
- Calculation for oxygen correction (ISO 6974-3)
- Bridge calculation across system channels
- Advanced Peak Identification for Individual peaks or peak Groups
- Unknowns handling
- Uncertainty Calculations
- Error propagation calculation (ISO 6974-2)

STANDARD TEST METHOD

- ISO 6974, ISO 6976, ISO 8973
- EN 15984 / DIN 51666
- EN 589
- ASTM D3588, ASTM D2598
- GPA 2172, GPA 2261, GPA 2286

GASXLNC™

Gas Analysis Software Excellence



Sample Name	Injection Date	Calculation Date
Demo Calibration on 7890	10/29/2007 11:31:02 AM	11/19/2012 3:23:27 PM

Application	Instrument	Method	Operator	Reviewer	Type	LIMS ID
FAST RGA	Instrument 1	Fast RGA	administrator	admin	Calibration 1	

Calculated Properties			
Ideal Density at 15 °C	1.3834	kg/m ³	
Molar Mass	32.71	g/mol	
Real Density at 15 °C	1.3902	kg/m ³	
Real Wobbe Index 15	40.29	MJ/m ³	
Superior Molar Calorific Value 15	1009.82	kJ/mol	

Component Name	Time [min]	Detector Code	Area	Unnorm Mol%	Mol%	Mass%
Carbonmonoxide	19.1301	TCD3 C, Aux	3.0093E+02	1.000	1.000	0.840
Methane	17.0743	TCD3 C, Aux	1.2071E+03	5.000	5.000	2.404
Unknown	15.6770	FID1 A, Front	3.0518E+01	0.006	0.006	0.018
Nitrogen	15.2506	TCD3 C, Aux	1.1595E+04	38.060	38.057	31.956
Oxygen	14.2495	TCD3 C, Aux	2.7225E+02	1.000	1.000	0.959
n-Pentane	13.9757	FID1 A, Front	8.6365E+03	1.000	1.000	2.162
Isopentane	11.4069	FID1 A, Front	8.5272E+03	1.000	1.000	2.162
1,3-Butadiene	10.0903	FID1 A, Front	2.0636E+04	3.000	3.000	4.864
Cis-2-Butene	9.1392	FID1 A, Front	7.0415E+03	0.990	0.990	1.665
Trans-2-Butene	8.5643	FID1 A, Front	2.0099E+04	3.000	3.000	5.045
Iso-Butylene	7.7696	FID1 A, Front	6.8797E+03	1.000	1.000	1.682
1-Butene	7.3773	FID1 A, Front	1.3447E+04	2.000	2.000	3.363
n-Butane	6.2605	FID1 A, Front	2.7102E+04	4.000	4.000	6.968
Ethane	5.9156	TCD3 C, Aux	1.4836E+03	4.100	4.100	3.695

ANALYSIS

Chromatogram View:

- Zoom/select
- Identify modes allow easy sample evaluation

REPORTING

- Print flexible reports
- Traceable, according to method or customized to need
- Export to file, LIMS

RELIABLE DATAMANAGEMENT

GASXLNC™ keeps track of all calibrations performed. This traceability allows for any result to be reproduced or recalculated with revised calibration data. Sample analysis results are maintained similarly.

Calibration can be performed in Single point, multilevel and bracketing mode, such as required in ISO6974-2. The calibration browser validates the calibration analysis and can be used to view analyzed calibration sets. The screen displays calibration plot and the calibration analyses results used, allowing calibration results to be approved or removed. Approved results are blocked from further change. The Trend Analysis function logs calibration/performance data over time, providing tools to the chemist for complying with any QC program.



solidpartners provensolutions

U.S.A.

PAC, LP | 8824 Fallbrook Drive | Houston, Texas 77064
T: +1 800.444.TEST | O: +1 281.940.1803 | F: +1 281.580.0719
sales.usa@pacpl.com | service.usa@pacpl.com

FRANCE

BP 70285 | Verson | 14653 CARPIQUET Cedex
T: +33 231 264 300 | F: +33 321 266 293
sales.france@pacpl.com | PACServiceFrance@pacpl.com

GERMANY

Badstrasse 3-5 | P.O.Box 1241 | D-97912 Lauda-Königshofen,
T: +49 9343 6400 | F: +49 9343 640 101
sales.germany@pacpl.com | service.germany@pacpl.com

SINGAPORE

61 Science Park Road | #03-09/10 The Galen
Singapore Science Park III | Singapore 117525
T: +65 6412 0890 | F: +65 6412 0899
sales.singapore@pacpl.com | service.singapore@pacpl.com

NETHERLANDS

P.O.Box 10.054 | 3004 AB Rotterdam
Innsbruckweg 35 | 3047 AG Rotterdam
T: +31 10 462 4811 | F: +31 10 462 6330
sales.netherlands@pacpl.com | service.netherlands@pacpl.com

RUSSIA

Shabolovka Street | 34, Bldg. 2 | 115419 Moscow
T: +7 495 617 10 86 | F: +7 495 913 97 65
sales.russia@pacpl.com | service.russia@pacpl.com

CHINA

Room 1003, Sunjoy Mansion | No. 6 RiTan Rd.
Chao Yang District | Beijing 100020
T: +86 10 650 72236 | F: +86 10 650 72454
sales.china@pacpl.com | service.china@pacpl.com

INDIA

1508 | Dev Corpora | Pokhran Road No.1
Eastern Express Highway | Thane (W) - 400 601
T: +91-22-6700 4848 | F: +91-22-4228 4950
sales.india@pacpl.com | service.india@pacpl.com

MIDDLE EAST

A1 Quds Street, A1 Tawar road | LIU#H13 Dubai Airport Freezone
Near Dubai Airport (terminal 2) | P.O.Box #54781 | Dubai, UAE
T: +971 04 2947 995 | F: +971 04 2395 465
sales.middleeast@pacpl.com | service.middleeast@pacpl.com

SOUTH KOREA

#621 World Vision Building | 24-2, Youido-dong
Seoul 150-010
T: +82 2785 3900 | F: +82 2785 3977
sales.southkorea@pacpl.com | service.southkorea@pacpl.com

THAILAND

26th Floor, M. Thai Tower | All Seasons Place
87 Wireless Road | Lumpini, Phatumwan | Bangkok 10330
T: +66 2627 9410 | F: +662627 9401
sales.thailand@pacpl.com | service.thailand@pacpl.com

PAC Authorized Representatives are also located in most countries worldwide. For more information visit www.pacpl.com



AC by PAC

AC Analytical Controls® by PAC, has been the recognized leader in chromatography analyzers for gas, naphtha and gasoline streams in crude oil refining since 1981. AC also provides technology for residuals analysis for the hydrocarbon processing industry. Applications cover the entire spectrum of petroleum, petrochemical and refinery, gas and natural gas analysis; ACs Turn-Key Application solutions include the AC Reformulyzer, SimDis, HiSpeed RGA and DHA instruments.

www.pacpl.com

SPECIFICATIONS

GAS CALCULATIONS OVERVIEW

Standard Method and Properties	HiSpeed RGA	Fast RGA	ISO 6974	GPA 2261	GPA 2286	Unit	Temp
ISO 6976							
Compressibility (dry)	√	√	√				15°C
Molar Mass	√	√	√	√	√	g/mol	
Inferior/Superior Cal Value Mol	√	√	√			KJ/mol	15°C
Inferior/Superior Cal Value Mass	√	√	√			MJ/kg	15°C
Inferior/Superior Cal Value Vol (Ideal/Real)	√	√	√			MJ/m3	15°C
Relative Density dry (Ideal/Real)	√	√	√				15°C
Density (Ideal/Real)	√	√	√			kg/m3	15°C
Wobbe Index (Ideal/Real)	√	√	√			MJ/m3	15°C
EN 15984 / DIN 51666							
EN 15984 / DIN 51666 Carbon Content	√	√	√	√	√	g/100 g	
EN 15984 / DIN 51666 Heating value Mol	√	√	√	√	√	KJ/mol	
EN 15984 / DIN 51666 Heating value Mass	√	√	√	√	√	KJ/100g	
GPA 2172							
GPM				√	√	Gal/1000 ft3	60 °F
Compressibility (dry/sat)				√	√		60 °F
Gross Heating Value (dry/sat gas, dry air)				√	√	Btu/ft3	60 °F
Real Gross Heating Value (dry/sat gas, dry air)				√	√	Btu/ft3	60 °F
Nett Heating Value (dry/sat gas, dry air)				√	√	Btu/ft3	60 °F
Real Nett Heating Value (dry/sat gas, dry air)				√	√	Btu/ft3	60 °F
Relative Density dry/sat gas (Ideal/Real)				√	√		60 °F
ASTM D 2598							
Relative density liquid	√	√				kg/m3	60 °F
Vapor Pressure	√	√				psi	100 °F
MON	√	√					
EN 589							
MON	√	√	√	√	√		
Vapor Pressure -10°/-5°/0°/10°/20°/40°	√	√	√	√	√	kPa	
Density acc ISO 8973	√	√	√	√	√	kg/m3	15°C
ISO 8973Me							
Vapor Pressure 37.8°/40°/50°/70°	√	√	√	√	√	kPa	37.8°C
Density	√	√	√	√	√	kg/m3	15°C
Miscellaneous							
Oxygen correction	√	√	√	√	√		
NGL Density	√	√	√	√	√	kg/m3	15°C
CO2 emission factor	√	√	√	√	√		
Viscosity	√	√	√	√	√		15°C
Schilling density	√	√	√	√	√	kg/m3	15°C
Superior calorific value	√	√	√	√	√	BTU/kg	

Due to continuing product development, specifications subject to change at any time without notice.

Copyright 2013 PAC L.P. All rights reserved 00.02.010 2013/2



USA • FRANCE • GERMANY • NETHERLANDS • UAE • RUSSIA • CHINA • SINGAPORE • SOUTH KOREA • THAILAND • INDIA